

PRESENTING LIMITED EDITION LUXURY
RESIDENCES WITH SECURED LIVING

GODREJ ICON

SECTOR 88A & 89A



GODREJ ICON

SECTOR 88A/89A



ARTIST'S IMPRESSION. NOT AN ACTUAL SITE PHOTOGRAPH.

BRAND GODREJ

Godrej Properties brings the Godrej Group philosophy of innovation and excellence to the real estate industry. Each Godrej Properties' development combines a 119-year legacy of excellence and trust with a commitment to cutting-edge design and technology. Godrej Properties is currently developing residential, commercial and township projects spread across 11.89 million square meters (128 million square feet) in 12 cities.

In the last 3 years, Godrej Properties has received over 200 awards and recognitions



CORPORATE LIFESTYLE AWARDS
2017



ASP NEWS REAL ESTATE AWARDS
2016



CONSTRUCTION WEEKEND AWARDS
2015



ET NOW
2015

Godrej | **PROPERTIES**

GODREJ ICON



**LOCATION &
CONNECTIVITY**



Metro Station



Proposed Metro Route



NH8



Dwarka Expressway



Pataudi Road



Commercial Complex



Medical Centre



Restaurant



Hotel



School



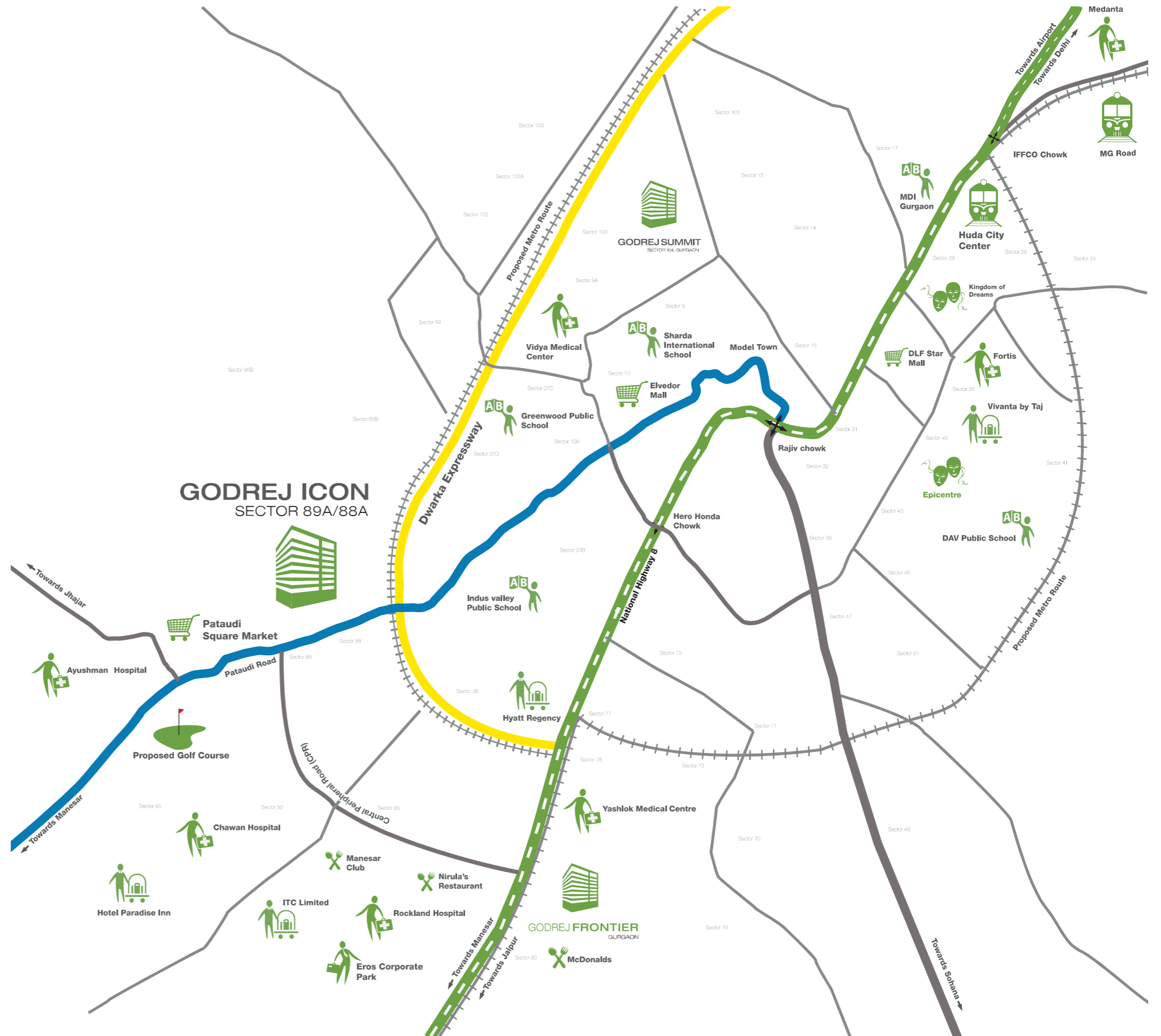
Entertainment



Mall/Market



Golf Course



*Map not to scale

CONNECTIVITY



Excellent connectivity
from IGI Airport



Proposed 60 m
access from
Dwarka Expressway

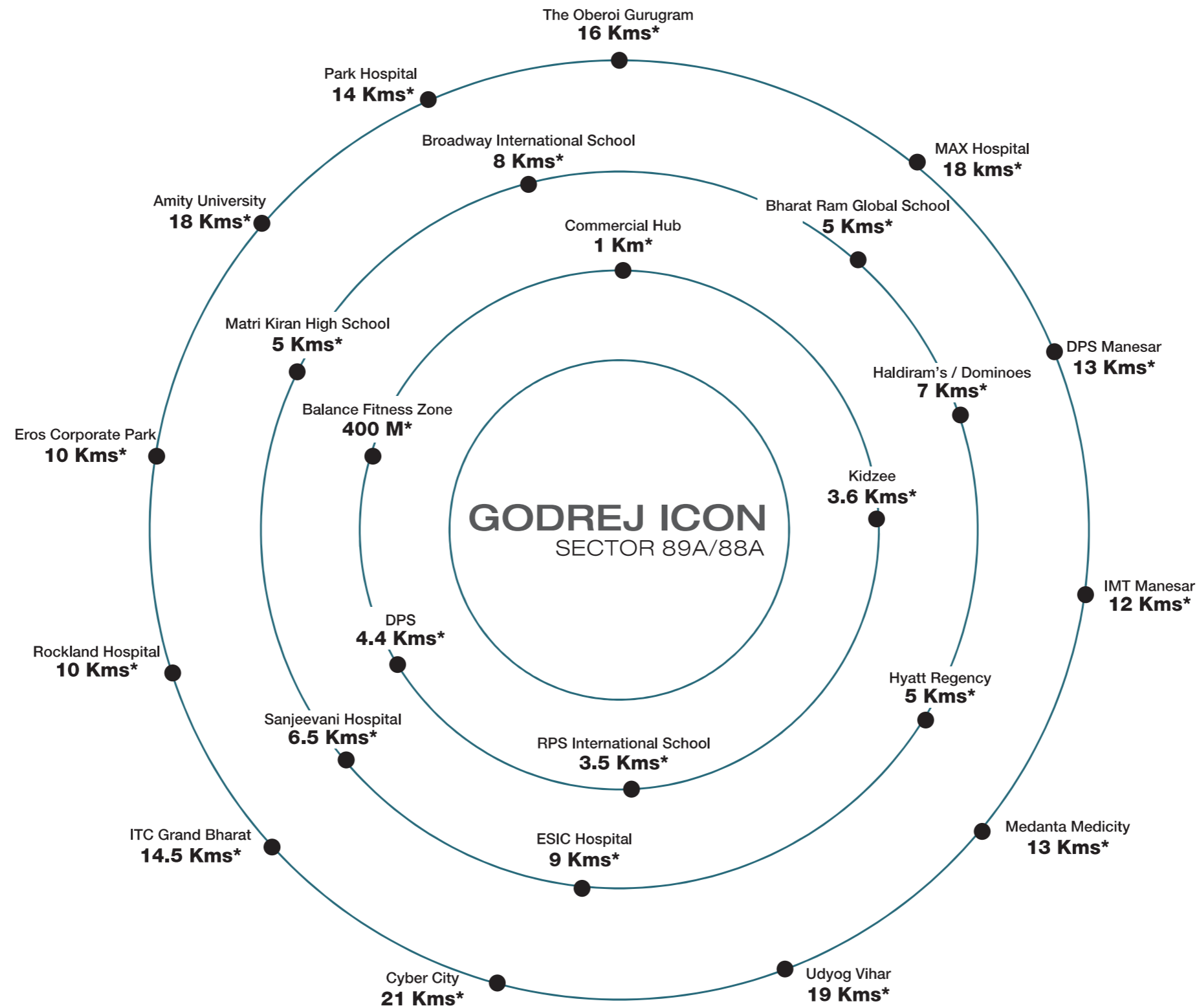


Seamless drive from
NH-8 and Pataudi Road



Close proximity to:
IFFCO Chowk | Rajiv Chowk
Kherki Daula Toll |
Kundli Manesar Palwal Expressway | SPR
Proposed ISBT and Metro Line

THE BEST OF INFRASTRUCTURE



*Distance measured by Google Maps.
*For illustrative purpose only.



AN ICON FOR GURGAON

Welcome to a lifestyle that only a few can call their own. Here luxurious towers, including a 32 storey icon stand in 6 acres of prime locale. Live the high life in one of the vicinity's tallest towers at the Sky Lounge and garden, set at the height of 130 feet.

ARTIST'S IMPRESSION. NOT AN ACTUAL SITE PHOTOGRAPH.

ICONIC INDULGENCE

Indulge your every sense at Godrej Icon. Choose from the crystal clear water of the infinity pool, from an invigorating jog amidst the clouds, to a quiet walk at the Zen garden, from spending quality time at the spa to the Organic garden - everything you need is right here at Godrej Icon.

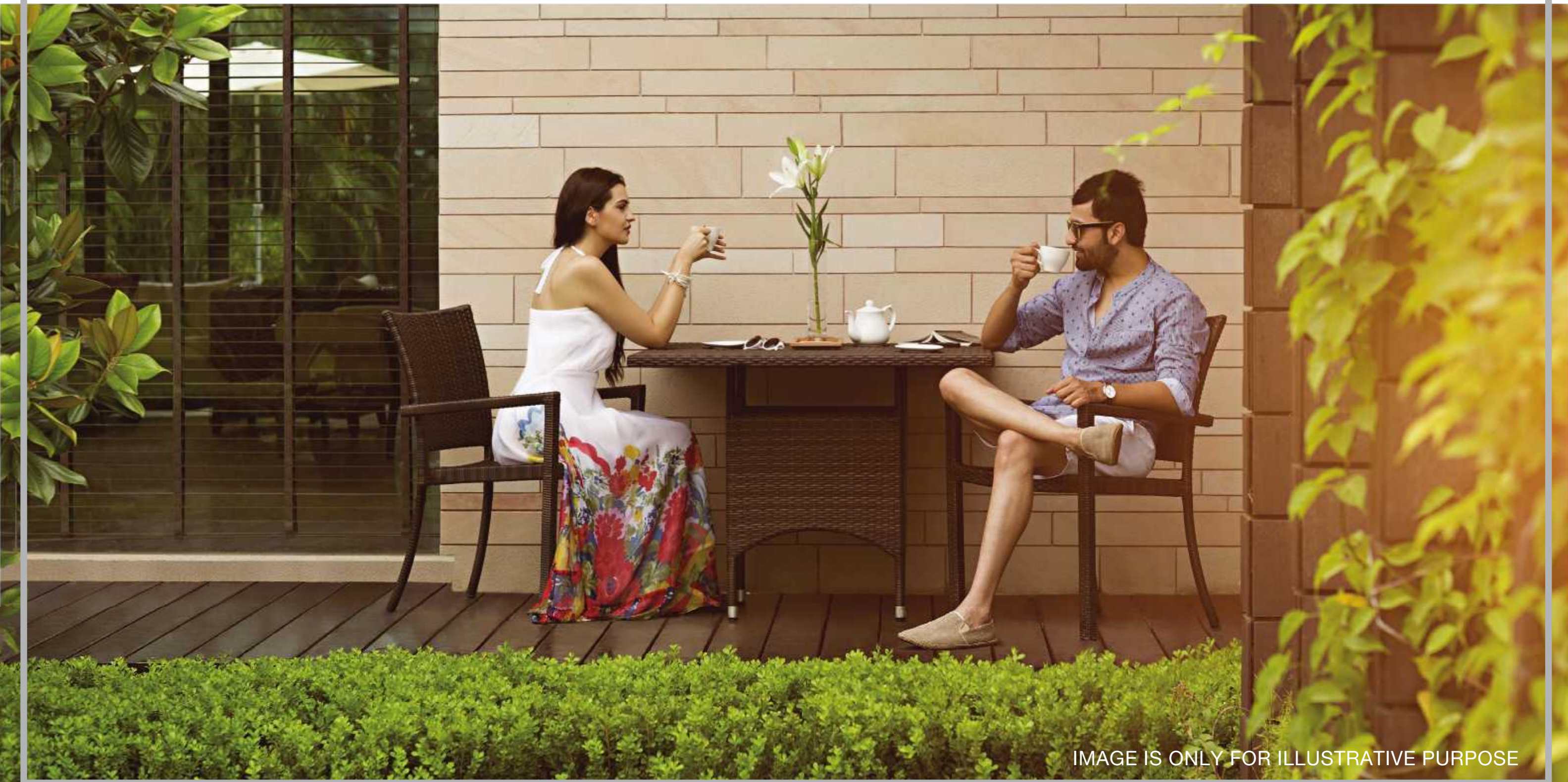


IMAGE IS ONLY FOR ILLUSTRATIVE PURPOSE

ORGANIC GARDEN



IMAGE IS ONLY FOR ILLUSTRATIVE PURPOSE

SKY WALK

Experience a world of lifestyle amenities at 130 feet above the ground

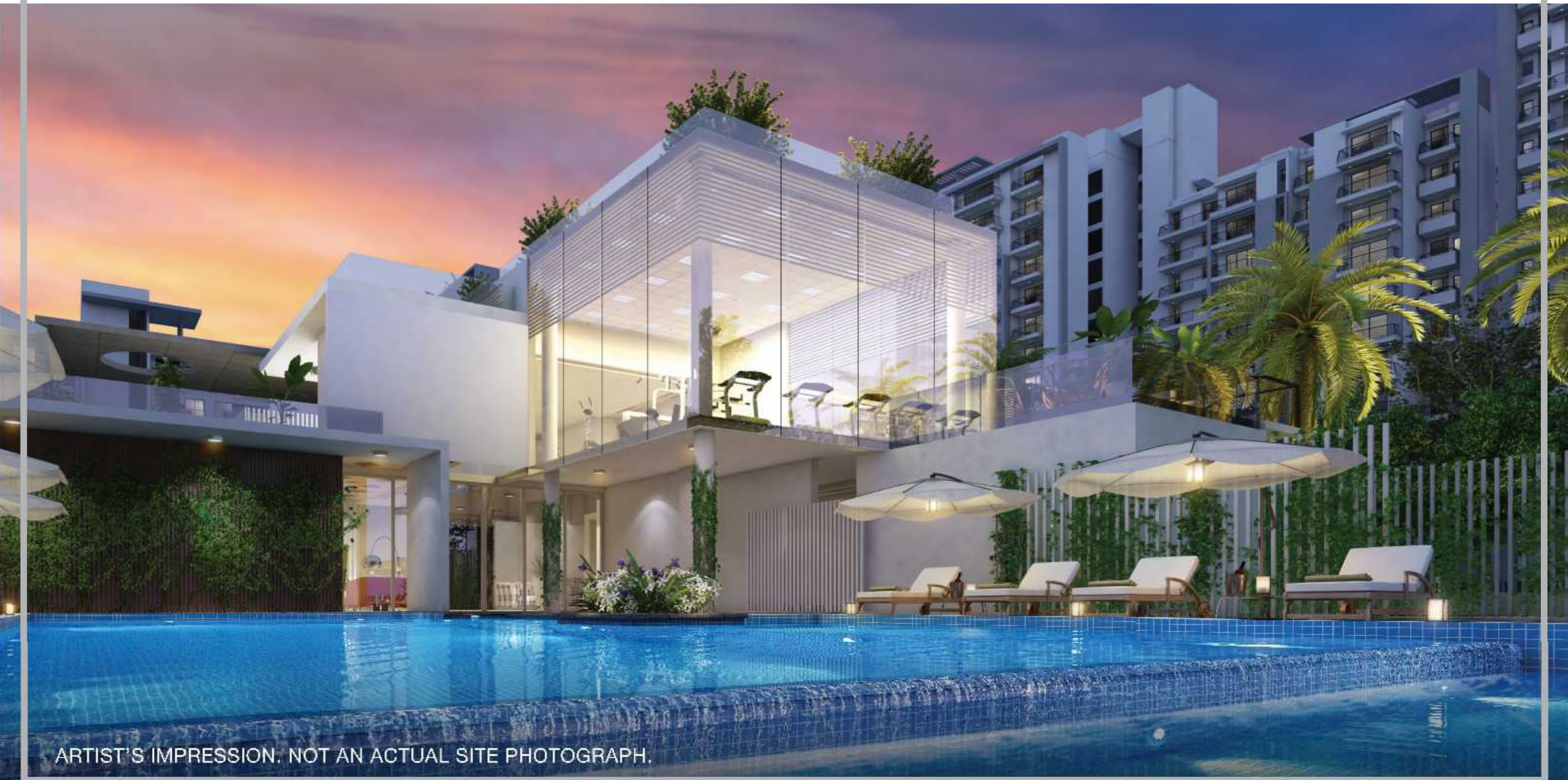


GODREJ ICON



**CLUB
AQUA**

A LIFESTYLE DEDICATED TO ENGAGE YOUR SENSES



ARTIST'S IMPRESSION. NOT AN ACTUAL SITE PHOTOGRAPH.

An aerial architectural rendering of a modern residential development. The scene features several multi-story apartment buildings with balconies, a central swimming pool with a palm tree in the middle, and various outdoor spaces including patios, walkways, and green roofs. The overall aesthetic is clean and contemporary, with a focus on greenery and communal areas.

WHERE THERE'S SPACE
FOR EVERYONE AND
EVERYTHING

ARTIST'S IMPRESSION. NOT AN ACTUAL SITE PHOTOGRAPH.

KIDS POOL



ARTIST'S IMPRESSION. NOT AN ACTUAL SITE PHOTOGRAPH.

POOLSIDE DECK



ARTIST'S IMPRESSION. NOT AN ACTUAL SITE PHOTOGRAPH.

SPA



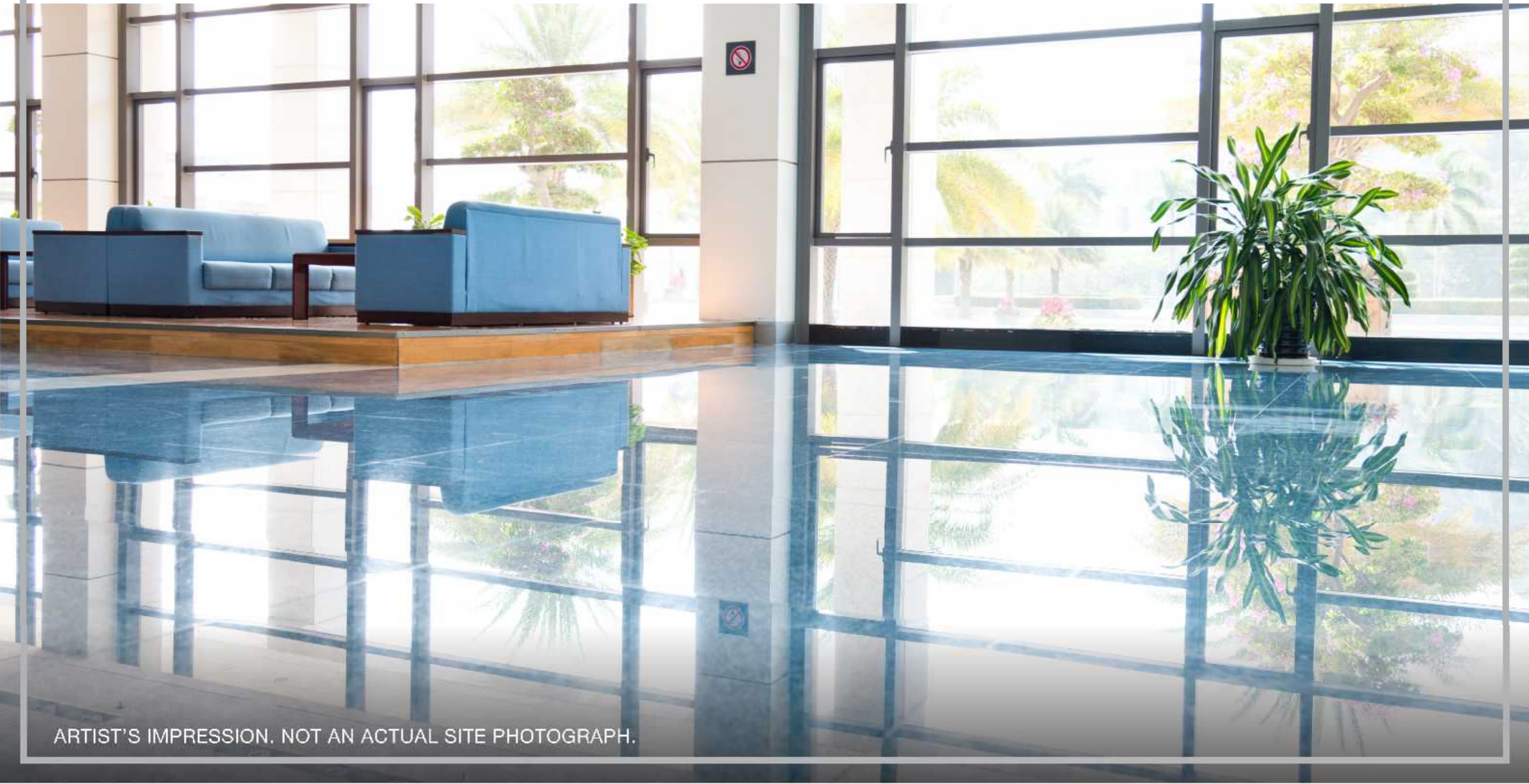
ARTIST'S IMPRESSION. NOT AN ACTUAL SITE PHOTOGRAPH.

INDOOR GAMING AREA



ARTIST'S IMPRESSION. NOT AN ACTUAL SITE PHOTOGRAPH.

MULTI-PURPOSE HALL



ARTIST'S IMPRESSION. NOT AN ACTUAL SITE PHOTOGRAPH.

SQUASH COURT



ARTIST'S IMPRESSION. NOT AN ACTUAL SITE PHOTOGRAPH.

YOGA/MEDITATION



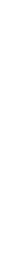
ARTIST'S IMPRESSION. NOT AN ACTUAL SITE PHOTOGRAPH.

GYM



ARTIST'S IMPRESSION. NOT AN ACTUAL SITE PHOTOGRAPH.

GODREJ ICON



BRAND
TIE UPS

GYMNASIUM BY HOLIFIELD GYM*



ARTIST'S IMPRESSION, NOT AN ACTUAL SITE PHOTOGRAPH.

*OR EQUIVALENT

SPA BY FOUR FOUNTAIN*



ARTIST'S IMPRESSION. NOT AN ACTUAL SITE PHOTOGRAPH.

*OR EQUIVALENT

GODREJ ICON



**CONCIERGE
SERVICES**

CONCIERGE SERVICES

CLUB CONCIERGE



GODREJ ICON

PRODUCT
DETAILS

PRODUCT CONFIGURATION

| Confugiration | Carpet Area (SQ M) | Exclusive Area (Sq M) | Total Usable Area (Sq M) |
|------------------------|--------------------|-----------------------|--------------------------|
| 2BHK + Study | 80.67 - 81.38 | 18.67 - 27.99 | 100.05 - 109.16 |
| 3BHK | 99.49 - 101.74 | 19.94 - 23.81 | 119.43 - 123.34 |
| 3BHK + Utility | 109.17 - 113 | 25.21 - 31.08 | 134.57 - 143.54 |
| 3BHK + Study + Utility | 145.88 | 28.68 | 174.56 |
| 4BHK + Utility | 133.83 | 23 | 156.83 |
| 4BHK + Study + Utility | 166.8 | 35.82 | 202.62 |

THANK YOU



This is not an offer, an invitation to offer and/or commitment of any nature. This contains artistic impressions and no warranty is expressly or impliedly given that the completed development will comply in any degree With such artist's impression as depicted. The furniture, accessories, paintings, items, electronic goods, additional fittings/ fixtures, decorative items, false ceiling including finishing materials, specifications, shades, sizes and color of the tiles, etc. (as shown in slide no: 9, 11, 13, 14, 16, 19, 29, 30) are only indicative in nature and are only for the purpose of illustrating/indicating a conceived layout and do not form part of the standard specifications/amenities/-

Services to be provided in the -unit. All specifications of the unit shall be as per the final agreement between the parties.

<http://www.harera.in/>, RERA REGISTRATION NO: 50 of 2017 Dated 12.08.2017/ License No. 85 of 2013 Building Plan Approval Memo No ZP – 959/SD(BS)/2014/7130, Dated 09/04/2014

The official website is www.godrejproperties.com . Please do not rely on information from any other source.